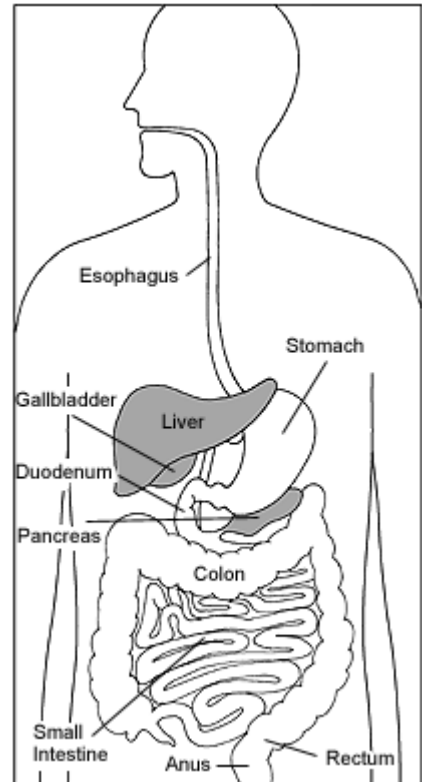


EGD

(EsophagoGastroDuodenoscopy)

EGD is a procedure used to diagnose disorders of the gastrointestinal tract, specifically the esophagus, stomach and duodenum (first part of small intestine). The doctor passes an endoscope (a thin flexible lighted tube with a camera on the end) through your mouth to inspect the tissue in your esophagus, stomach and duodenum. At this time, biopsies can be taken. We work with expert pathologists and cytologists. Rarely biopsies may not represent the actual situation and give falsely negative or positive findings. We work to integrate each piece of information into the overall picture and determine a treatment plan to fit you.



What to Expect with your EGD

Before

Do not eat or drink anything after midnight the night before your procedure. On the day of your EGD, you will arrive 30 minutes before the procedure is scheduled. You will put on a hospital gown and remove any jewelry, eyeglasses, contacts, and dentures. The doctor and/or nurse will explain the procedure again and answer any questions you might still have. You will be asked to sign a consent form giving permission for the procedure. A nurse will put in an IV in your arm before the procedure starts for hydration and sedation medication. You will be connected to a machine that will monitor your heart rate, blood pressure and blood oxygen level throughout the procedure.

During

Local anesthetic may be sprayed onto your throat to make it numb and you will be given medication through the IV to make you sleepy and relaxed. A mouth guard will be placed to protect your teeth and gums. While in a comfortable position on your left side, the doctor will pass the endoscope through your mouth and down your throat. The endoscope will not interfere with your breathing. The doctor will guide the endoscope through your esophagus, stomach and duodenum. Once in the stomach and duodenum, the doctor will carefully inspect the tissue and take any necessary biopsies. The examination generally takes 15-45 minutes depending on the findings.

After

You will wake up from the sedation in the recovery room. Your throat may feel sore. Because of the sedation, you should **NOT** attempt to take anything by mouth for at least one hour. In most cases, a regular diet can be resumed later in the day as tolerated. In some cases, your doctor may






SMILOW CANCER HOSPITAL
AT YALE-NEW HAVEN
20 YORK STREET
NORTH PAVILION 4-402
NEW HAVEN, CT 06517
P (203) 200-5083
F (203) 200-2235

PRIYA JAMIDAR, MD
HARRY ASLANIAN, MD
JAMES J FARRELL, MD
HILLARY DRUMM, APRN
JENNIFER RUBY, APRN

recommend advancing your diet more slowly, and taking only clear liquids for the rest of the day. Your belly may feel bloated and full from air inflated through the endoscope during the procedure. You will remain in recovery for up to 2 hours. A companion **MUST** be able to drive you home, as the sedation impairs your reflexes and judgments. For the remainder of the day you should **NOT** drink alcohol, drive any type of vehicle, operate machinery, or make any important decisions. We suggest you rest quietly.

Risks

EGD can rarely (1 in 1000) result in complications such as reactions to the medications, making a hole in the digestive wall (perforation of the esophagus, stomach or intestines), and bleeding. While these complications are not common, in certain cases they can be very serious and may require urgent treatment, an extended hospitalization, or even an operation.

*Be sure to inform us immediately if you have any increased pain, dizziness, fever, chills, rectal bleeding or vomiting **after** the EGD.

Please take the time to consider the benefits and risks this procedure has to offer you.

Drs. Jamidar, Aslanian & Farrell want you to have the best procedure experience possible. Please call with any questions, concerns or problems.
M-F 8:30 am-4:30 pm at (203)200-5083

August 2016






SMILOW CANCER HOSPITAL
AT YALE-NEW HAVEN
20 YORK STREET
NORTH PAVILION 4-402
NEW HAVEN, CT 06517
P (203) 200-5083
F (203) 200-2235

PRIYA JAMIDAR, MD
HARRY ASLANIAN, MD
JAMES J FARRELL, MD
HILLARY DRUMM, APRN
JENNIFER RUBY, APRN

Your EGD is scheduled for
_____ at _____ am/pm; _____ am/pm arrival
with **Dr. Jamidar/ Dr. Aslanian/ Dr. Farrell**
at the **Yale Center for Advanced Endoscopy on Smilow 4.**

Instructions for your EGD

Two Weeks before your EGD

1. Call us if you have **allergies** or bad reactions to antibiotics, medications or anesthesia.
2. Call us if you have **heart** or **breathing** problems, as we will need recent records of tests and visits from your heart and lung doctor before the procedure.
3. Call us if you take **blood thinners** like Coumadin/warfarin or Plavix or aspirin, as they may need to be adjusted before your procedure.
4. Call us if you have **diabetes**, as your medications may need to be adjusted the AM of, or PM before your procedure.
5. Call us if you are on **dialysis** or have **kidney** problems, as you will need bloodwork before your procedure.

The Night before your EGD

1. Do not eat or drink ANYTHING after midnight, including gum/candy or cigarettes. You may take regular PM and AM medications with a small sip of water (though blood thinners and diabetes medications may have to be adjusted).

The Day of your EGD

1. Arrive at the Center for Advanced Endoscopy 1 hour before your EGD is scheduled.
2. Validated parking is available at the Smilow Cancer Hospital Valet Service.

After your EGD

1. A companion must drive you home, as the sedation affects your reflexes and judgments.
2. For the remainder of the day, you should not operate any vehicle, heavy machinery or make important decisions due to the sedation. We recommend resting quietly.
3. If you have any increased pain, rectal bleeding, tarry stools, vomiting blood, fever, chills or jaundice please call Drs. Jamidar/Aslanian/ Farrell immediately.

Following these instructions is very important; not doing so may result in delaying, rescheduling or canceling the procedure.

Drs. Jamidar, Aslanian & Farrell want you to have the best procedure experience possible. Please call with any questions, concerns or problems.

M-F 8:30 am-4:30 pm at (203)200-5083

August 2016

